

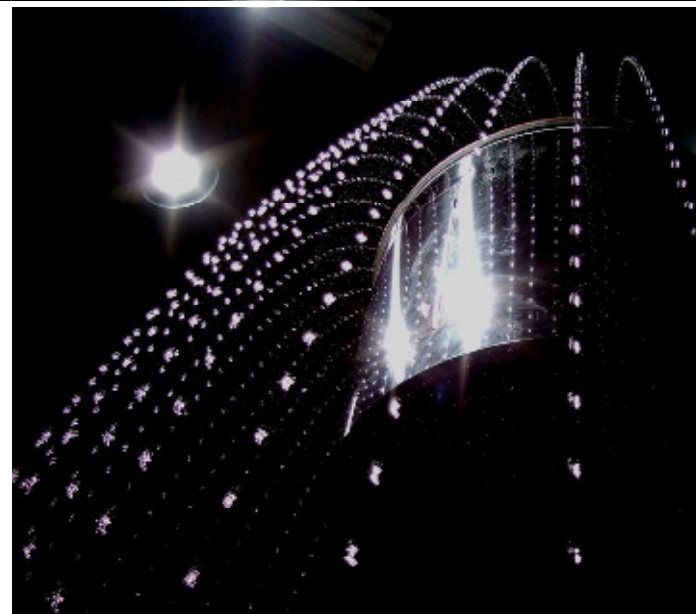


 Water Pearl

Antigravity Water
Water Pearl >>>

 **Water Pearl**

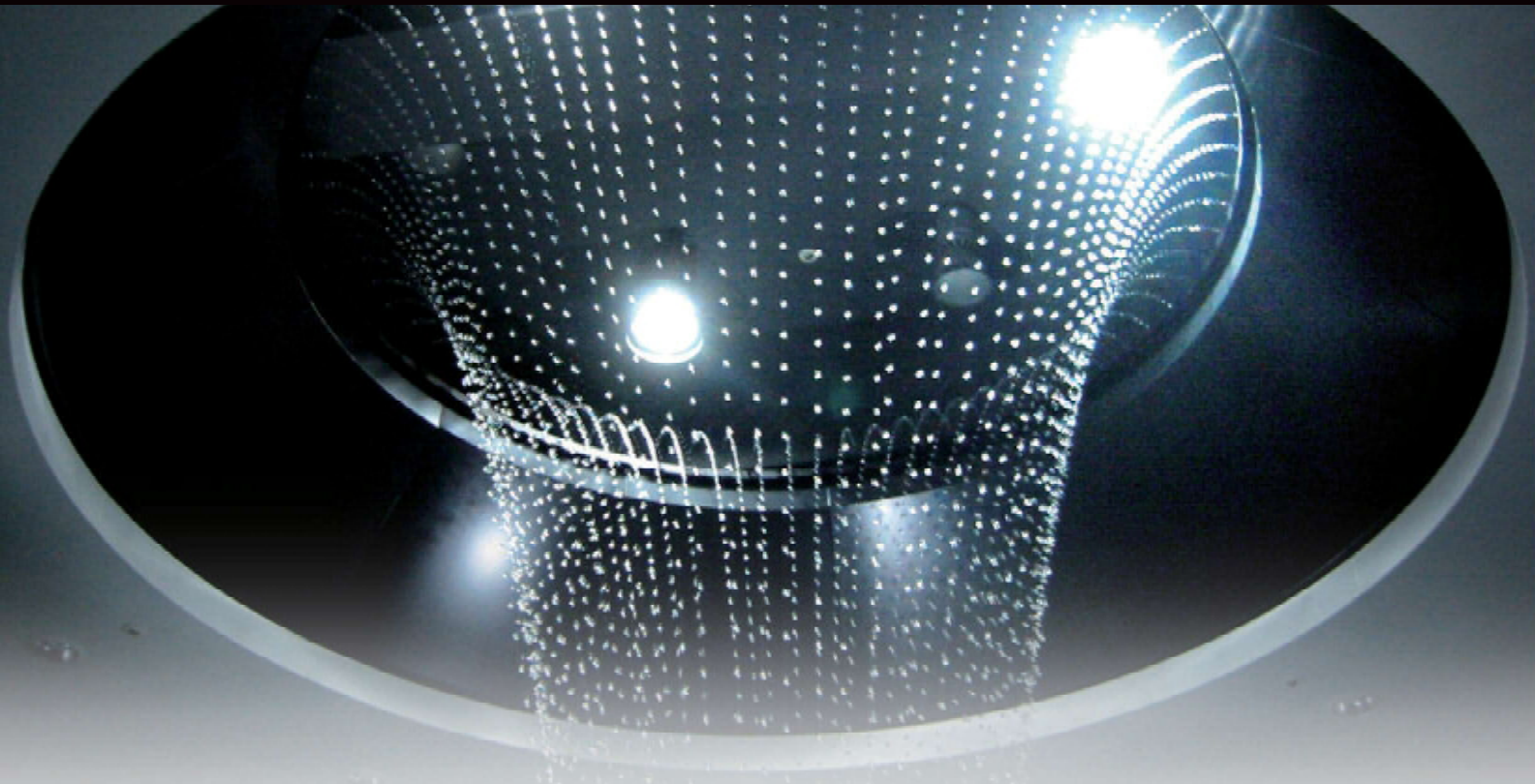
1-17-19 Nishishinagawa, Shinagawa City,
Tokyo 141-0033, Japan
TEL: (+81) 03-5740-6561/FAX: (+81) 03-5740-6563
www.waterpearl.co.jp



A fantastic fountain, its spherical water drops float in midair. Can you imagine? Water Pearl is a very unique fountain system taking advantage of an optical illusion utilizing water and light. With your hand, you can catch the marble like water drops floating in midair. It just looks real water drops, not by illusion.

www.waterpearl.co.jp

WaterPearl Fountain Displays the Miracle of Art

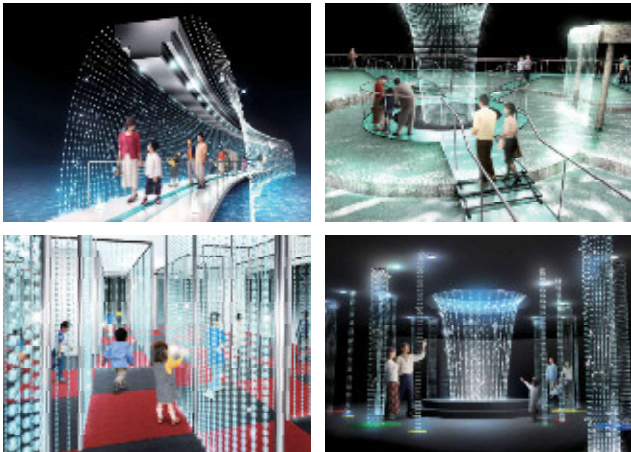


Water Pearl, A Levitating Water

A levitating water against the gravity. Water Pearl is a mysterious phenomenon itself. It is an ultimate fountain system materialized with an excellent technology of a simple principle which is utilizing an afterimage phenomenon of human eyes. Its feature is “real” after all. You can catch the levitating water with your hand. And from your hand you can experience the water rising up. This unique fountain, Water Pearl, is installed in places where children gathered as well as all kinds of commercial facilities such as shopping moles and restaurants, etc.

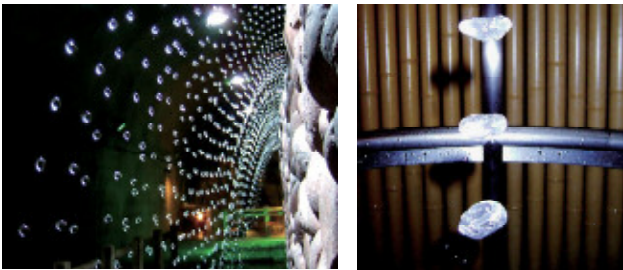
Direction Variation

Direction variation is abundant. It is possible to design freely fitting curtain type, pillar type, parabola type, etc. corresponding to space and purpose. One unit has 10 to 20 nozzles, and it will be designed from a basic one to large scale fountains by connecting the units. Water Pearl does not waste of water as the pooled water is circulated. Another point of Water Pearl is to utilize the lighting art. It shows an effective feature especially at night and light controlled indoors.



A Principle of Water Pearl

Water Pearl is a fountain system which utilizes the afterimage phenomenon of human eyes by keeping jetting of the same sized droplets and make a strobe light flashing at almost the same speed with the number of jetting. As an example, its speed is jetting 50 droplets/second and flashing light 50 times. As it is so fast speed, human eyes don't realize the trick but catch levitating droplets only. If you give a gap in afterimage phenomenon by changing the flashing times of the strobe light, you can easily direct that the droplets can rise up and fall down.



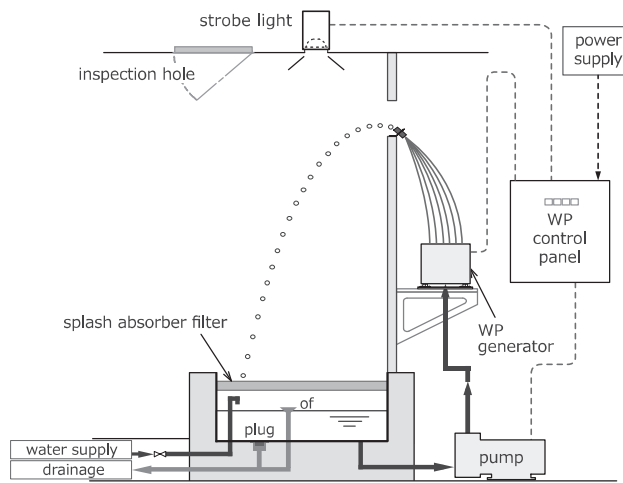
Water Pearl Projection Mapping

Can't we describe letters and patterns with water droplets? Providing answer to such a request, Water-Pearl Co., Ltd. developed a special high-speed projector with production software collaborated with Japanese excellent digital art group, and obtained Japan and U.S. patent in 2021. With this development, we became able to control the movement of each droplet against gravity needless to say letters and patterns.



Schematic for Piping & Wiring

A Parabola type



B Vertical type

